



Royal Albert Hall

# Lighting Specification

**July 2022**

Royal Albert Hall  
Kensington Gore  
London  
SW7 2AP  
020 7589 3203  
[www.royalalberthall.com](http://www.royalalberthall.com)

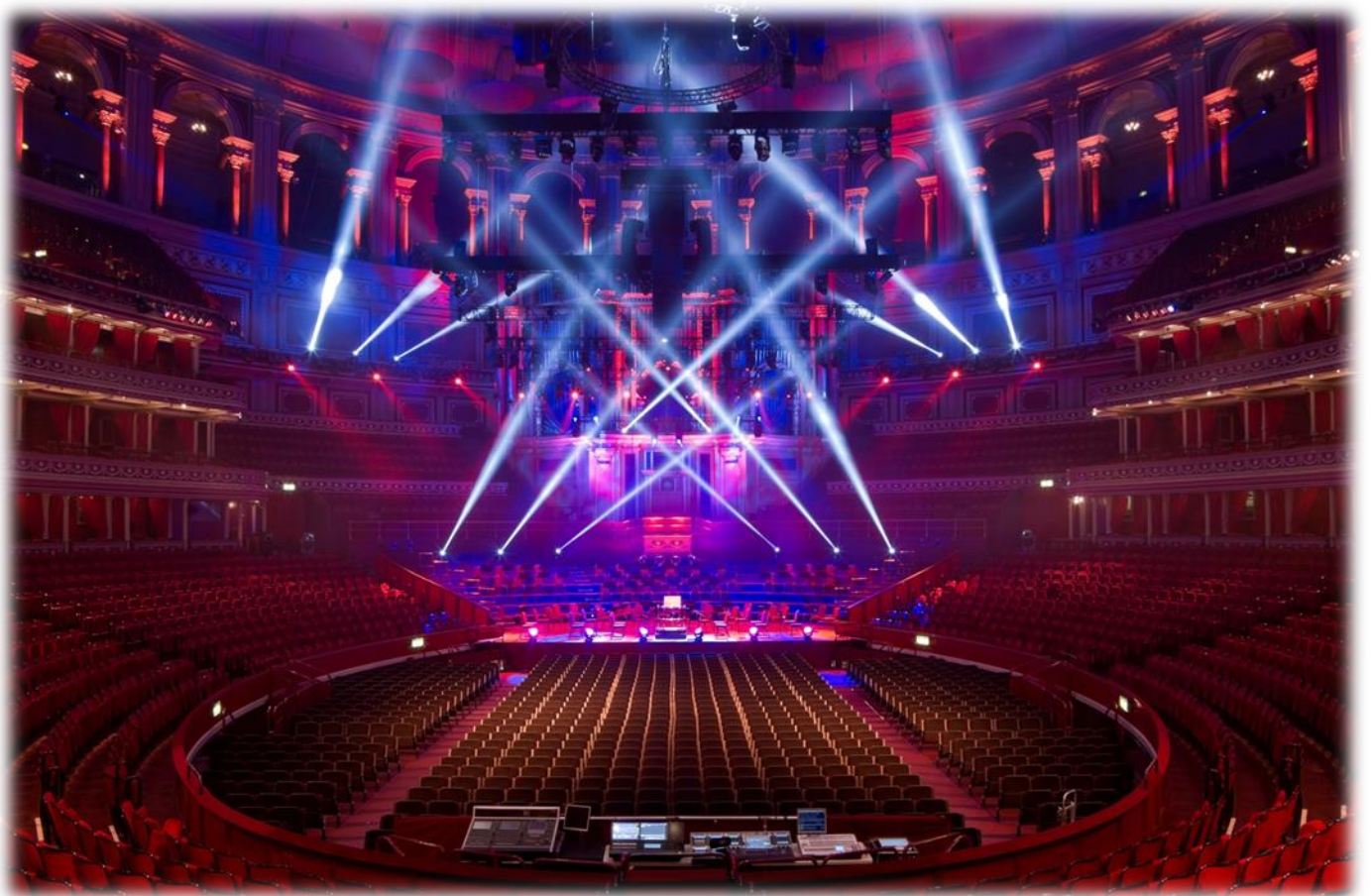
## **About This Document**

These Lighting Specifications are a detailed guide to the lighting system and facilities available at the Royal Albert Hall, London.

This is a supplementary document to be used alongside the RAH Technical Specifications. This information is meant as a guide to incoming companies and productions, but is not exhaustive so should not be used in isolation. The information is subject to change without notice.

All events coming to the Hall will be assigned a dedicated Technical Supervisor (TS) to oversee the production, please consult with them for all aspects of your technical requirements, for more information and for hire prices where applicable.

This document and more are available electronically via our website [www.royalalberthall.com/about](http://www.royalalberthall.com/about) or contact your TS.



**Figure 1: The Royal Albert Hall, with production lighting**

## **Contents**

<b><i>About This Document.....</i></b>	<b><i>2</i></b>
<b><i>Contents .....</i></b>	<b><i>3</i></b>
<b><i>Technical Contacts .....</i></b>	<b><i>4</i></b>
<b><i>Overview .....</i></b>	<b><i>5</i></b>
<b><i>Lighting Infrastructure .....</i></b>	<b><i>5</i></b>
<b><i>Houselights .....</i></b>	<b><i>10</i></b>
<b><i>Control &amp; Consoles .....</i></b>	<b><i>10</i></b>
<b><i>Lighting Equipment .....</i></b>	<b><i>11</i></b>
<b><i>Lighting Packages Breakdown .....</i></b>	<b><i>12</i></b>
<b><i>Moving Lights Gobo Reference .....</i></b>	<b><i>13</i></b>
<b><i>DMX &amp; Hard Power Patch List .....</i></b>	<b><i>17</i></b>
<b><i>Royal Albert Hall Dimmer/Address Cheat Sheet .....</i></b>	<b><i>22</i></b>

## **Technical Contacts**

<b>Lighting Operations Manager</b>	Jon Vivash	
<b>Lighting Designer</b>	Richard Thomas	020 7959 0566
<b>Lighting Technician</b>	Nick Humphrey	
<b>Lighting Technician</b>	Sam Hayes	
<b>Technical Operations Manager</b>	<i>Role Vacant</i>	
<b>Rigging Manager</b>	<i>Role Vacant</i>	

### **Overview**

The Royal Albert Hall lighting rig consists of a fixed rig of intelligent fixtures spread across 4 house trusses over-stage, and an advance truss and circular truss located in the auditorium. There is also a fixed rig of generic and intelligent fixtures spread around the Circle rail, Organ Circles and Gallery level.

### **Lighting Infrastructure**

#### ***Lighting Network***

There is a comprehensive network of CAT5 and fibre-optic runs throughout the auditorium supporting the ArtNet Protocol. These runs congregate in the Dimmer room.

Connections are located in appropriate locations within the auditorium and can be connected either directly by Ethernet or Opticonn (via in-house switch). See the following page for plan. Locations include:

- Rear Arena (2 x ArtNet)
- Loggia 18 (2 x ArtNet)
- G Stalls platform (2 x ArtNet)
- Upstage Left - back wall (2 x ArtNet)
- Upstage Right - back wall (2 x ArtNet)
- Arena A Vomitory (1 x ArtNet)
- RAH Control Room (ArtNet)
- Gallery Bay 1 (ArtNet)
- Gallery Tech Area - behind the organ (2 x ArtNet)
- Gallery Bay 12 (3 x ArtNet)
- Dimmer Room (ArtNet)
- Arena F Vomitory (1 x ArtNet)
- Roof (ArtNet)

There is second, physically separate network running MA Net2, which is connected to the RAH Grand MA NPU in the Dimmer Room, as below:

- Rear Arena (2 x MA Net2)
- Loggia 18 (2 x MA Net2)
- RAH Control Room (1 x MA Net2)
- Upstage Centre – back wall (2 x MA Net2)
- Gallery Bay 1 (1 x MA Net2)
- Gallery Bay 12 (1 x MA Net2)
- Dimmer Room (Switch)

#### ***DMX***

There are patchable DMX (XLR5) tie lines throughout the auditorium, terminating in the Dimmer Room, where they can be patched to each other, or via Input or Output Nodes, and DMX splitters. An outline of their locations is below:

- Rear Arena - Input (4 x XLR5 M)
- Grand Tier 22 - Input (4 x XLR5 M)
- Gallery Bay 12 - Input (4 x XLR5 M)
- Upstage Left - back wall - Output (2 x XLR5 F)
- Grand Tier - Outputs (4 x XLR5 F)
- Circle Rail - Outputs (12 x XLR5 F)
- Gallery - Outputs (24 x XLR 5 F)

Many of these tie lines are in use for the RAH rig, so please discuss with your TS if you require use of any.

More information can be found in figure 3 – Gallery Patching

Lighting Network points

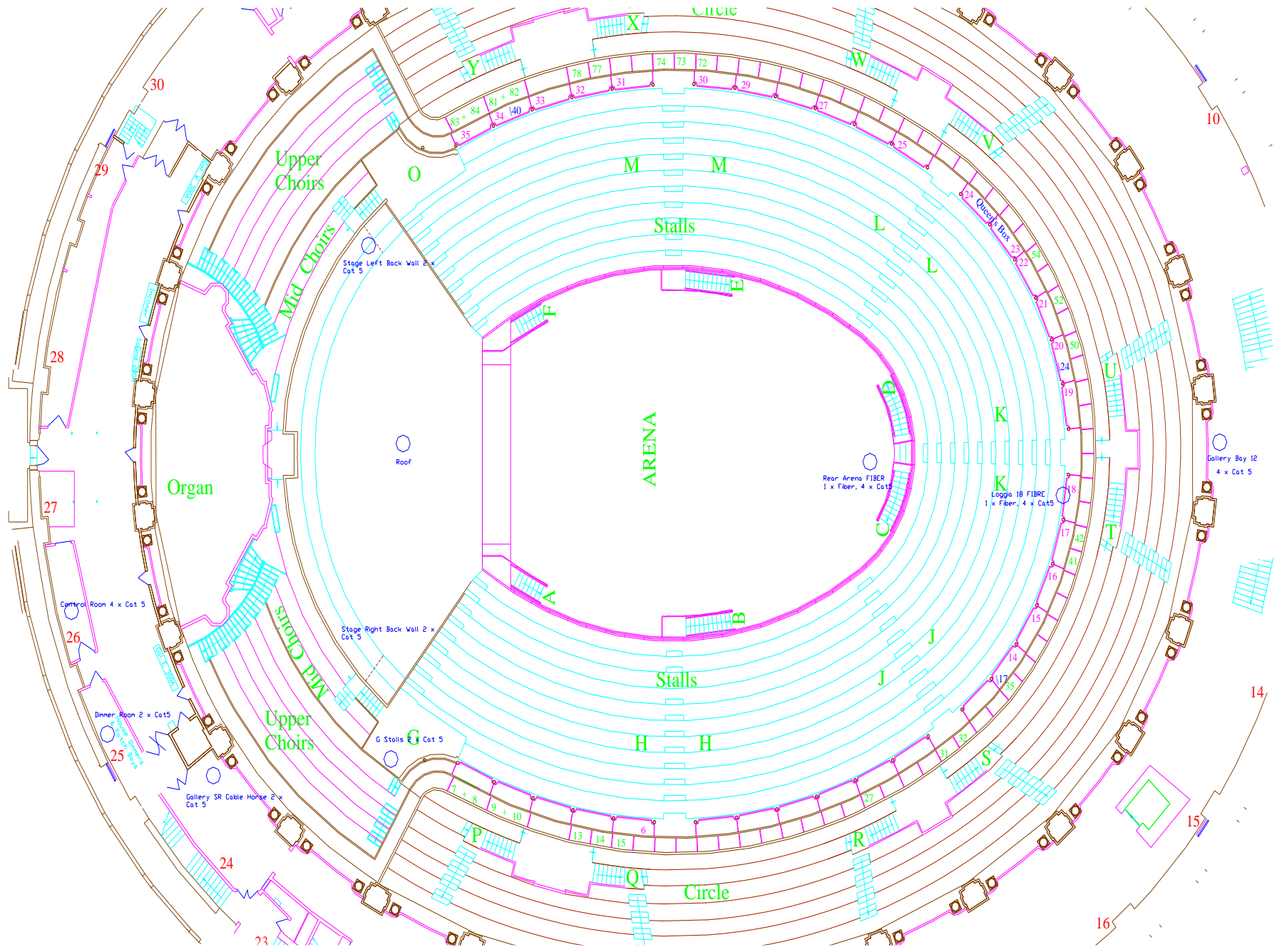


Figure 2: Lighting Network Points

## ***Dimming & Hard Power***

All lighting circuits within the Auditorium and on the house trusses terminate in the Dimmer room.

There are 18 circuits on Stage, available as 16A outlets with parallel Socapex outlets.

There are 140 circuits around the Circle rail, available as dual 16A outlets, with parallel Socapex outlets.

There are 100 circuits around the Gallery, some available as Socapex and some as 16A outlets. For a detailed breakdown of Gallery sockets, see Figure 3: Gallery Patching

Note that the majority of the Circle and Gallery circuits are in use for the RAH rig.

The RAH Dimmer room can supply 216 ways of dimming and 168 ways of hard power, of which there are 125 dimmers and 130 ways of hard power allocated to the fixed rig. The remainder are patchable as required.

## ***House Trusses***

The house trusses are rigged with permanently installed Socapex, fed via reels in the roof, which is fixed to either Socapex or with parallel 16A breakouts. Their locations are shown Figure 4 – Truss power and data outlet locations

Many of the circuits are used by the in house rig, with only a few remaining on each truss for production use, as per below:

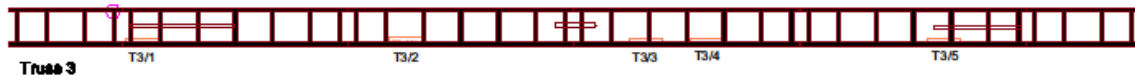
- Truss 1 – 2 Spare ways (All socas active)
- Truss 2 – 8 Spare ways (3 active socas, 1 complete free soca)
- Truss 3 – 9 Spare ways (4 active socas, 1 complete free soca)
- Truss 4 – 6 Spare ways (All socas active)
- Advance Truss – 3 spare ways (All socas active)
- Circle Truss – 8 Spare Ways (2 active socas, 1 complete free soca)

Bay no.	32A SPN	DMX Out A	DMX Out B	Comms	Socapex	Ind A	Ind B	F circuit (paired)	13A socket x2
		*= In Use for RAH rig	*= In Use for RAH rig		*= In Use for RAH rig	*= In Use for RAH rig	*= In Use for RAH rig	*= In Use for RAH rig	
Door 11 30				House & Visitor					✓
1		✓	✓*		✓	✓*	✓*	✓	✓
3	1	✓	✓*	House & Visitor	✓*	✓*	✓*	✓*	✓
5	1	✓	✓*		✓*	✓	✓*	✓*	✓
7	1	✓*	✓*	House & Visitor	✓*	✓*	✓*	✓*	✓
9	1	✓*	✓*		✓*	✓	✓*	✓*	✓
11	1	✓*	✓*	House & Visitor	✓*	✓	✓*	✓*	✓
12	2	DMX in x 4	Network x 4	House & Visitor					
13	1	✓	✓*	House & Visitor	✓*	✓	✓*	✓*	✓
15	1	✓	✓*		✓*	✓	✓*	✓*	✓
17	1	✓*	✓*	House & Visitor	✓*	✓*	✓*	✓*	✓
19	1	✓*	✓*		✓*	✓	✓*	✓*	✓
21	1	✓*	✓*	House & Visitor	✓*	✓*	✓*	✓*	✓
23		✓	✓*		✓	✓*	✓*	✓	✓
Door 1 24		DMX in x 4	Network x 4	House & Visitor					✓

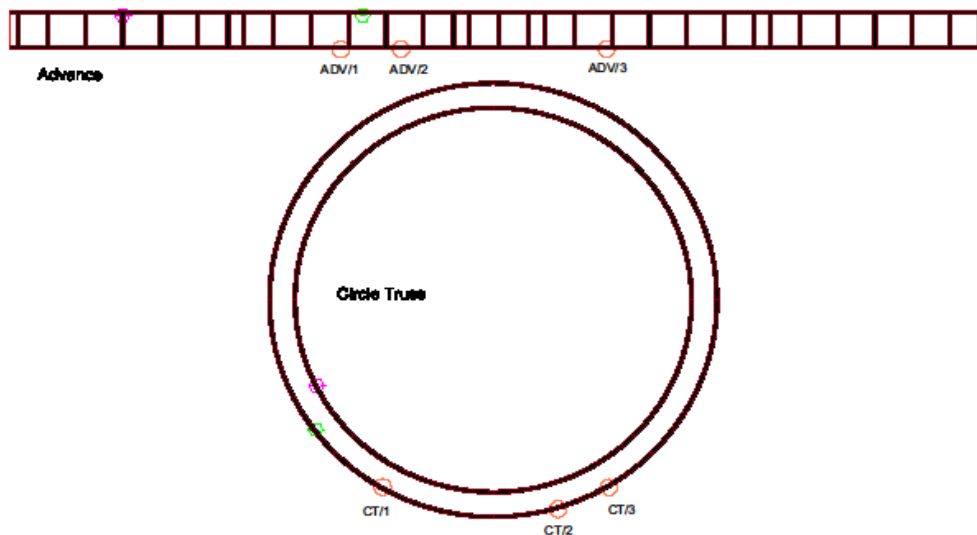
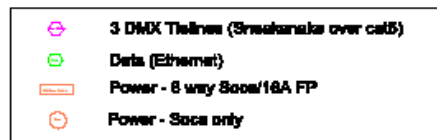
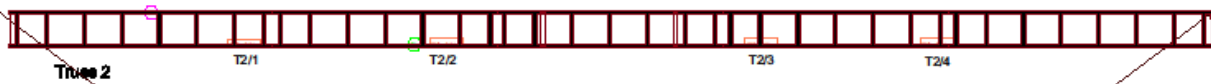
**Figure 3: Gallery Patching**



**Figure 4: Truss Power and Data Locations**



## Lighting Truss Power and Data Locations



## **Houselights**

The auditorium houselights and working lights are controlled via ETC Paradigm. The RAH will retain responsibility for their operation, including for show cues.

There are control panels in the following locations:

- Stage Right Bullrun
- Stage Left Bullrun
- Control Room Trolley
- G stalls (not for general use)
- Portable (normally rear arena, loggia 18 or gallery level behind the organ, with lighting desk)

There are 4 Houselight states: Full, Half, Rehearsal, and Off.

Where production requires a specific houselight state – such as creating a suitable 'Off' level for camera shots with some light in on auditorium boxes – the Rehearsal state can be used to create this. Your TS will take responsibility for this.

The states fade over 10 seconds – if necessary the Master Fader can be used to fade over a custom time.

## **Control & Consoles**

The Hall has two console options for control:

- GrandMA2 Light, with touchscreen MA OnPC with Command wing, and NPU.
- Chroma Q Vista EX, with touchscreen PC and S3 wing.

There is a permanent PC in the Control Room on the network, which can run MA or Vista software, as well as ArtNet monitoring and ELC node setup software.

For fault finding and focussing, there is an ELC Focus Hand which can control all dimmers independent of the desk.

The house rig is spread over 12 universes. (Universe 1-4 dimmers and auditorium lighting. Universes 5-11 are the over stage trusses, Universe 12 generally for floor package)

## **Art-Net merging of 2 Consoles (HTP Art-Net Merge)**

The rig is regularly shared between two consoles, for example if the incoming show uses the over stage trusses and want the auditorium lighting on a different desk, then the two or three desks can be merged using the ELC nodes. HTP merging for 3 inputs is enabled on all nodes.

If merging between desks is required then the incoming show should only patch the parts of the rig required by them and turn off any unused universes and the RAH will unpatch/0 value anything that the incoming show requires, that way sharing the rig as required.

## Lighting Equipment

Qty.	Description	Notes
Moving Lights		
16	Robe BMFL Spot*	* - As part of the fixed lighting rig. N.B. These units cannot be de-rigged or moved.
24	Martin Mac Ultra Performance*	
12	Martin Viper Wash DX*	
36	Robe DL7PC Wash*	
24	Robe Mega Pointe* (8 of these floating stock)	
16	Martin Encore Performance CLD*	
28	Robe LEDbeam 350* (16 of these floating stock)	
LEDs		
12	ETC Lustr 2 Fresnel*	Installed in the Gallery for Mushroom lighting Installed in the Gallery to up-light the pillars 14 Installed to light Organ, 24 installed to light roof dome
12	ETC Lustr 2 14 Degree + Diffuser*	
13	Pulsar Chroma Flood 200*	
60	Coemar Parlite RGB*	
38	Robe Parfect 100*	
18	Chauvet Strike Array 2 LED Molefay*	
Generic Profiles		
12	15°-30° Source 4 zoom+	
10	19° Source 4 profile	
6	10° Source 4 profile+	
9	5° Source 4 profile	
12	50° Source 4 Profile+	
14	25°-50° Source 4 Junior zoom	
Other Generics		
96	Source 4 Par+	+ - As part of a fixed auditorium lighting package
40	Par 64+	
12	2 Lamp Molefay	
2	4 Lamp Molefay	
10	Par 64 Chrome floor cans	
16	Par 64 Chrome ACLs (4 bars of 4 pars)	
10	CCT Minulette fresnels	
Flood/House lights		
6	Selecon Lui Cyc Flood+	
4	2kw Robert Juliat fresnels	
Special effects		
4	MDG Atmosphere ATMe	
2	Unique II Hazers	
Follow Spots		
4	2.5kw Robert Juliat Cyrano Follow Spots(Electronic Ballast)	Available at extra cost
Lighting Consoles		
1	Grand MA 2 Light (with NPU)	ETC Sensors (3 racks of 72 circuits)
1	Grand MA Command wing with Touchscreen PC	
1	Chroma Q Vista EX with Touchscreen PC	
1	Jands Vista S3	
1	MA Dot 2 Core and wing (Elgar Room)	
	168 ways of hard power	
	216 ways of dimming	

Figure 5: Lighting Equipment List

## **Lighting Packages Breakdown**

The Hall's lighting equipment is available for hire by incoming productions, with the rig separated into packages. The contents of each package is itemised below.

### ***Open White Wash Package***

Included in Venue Hire – **when operated by RAH Personnel**

- All Robe DL7PC Washes – only static and open white and when operated by RAH
- All Encore Performances – only static and open white and when operated by RAH
- All Selecon Lui Floods
- All OW Parcans
- Source 4 Zooms

### ***Overstage Truss Package***

Includes Advance Truss, Truss 1, Truss 2, Truss 3, Truss 4 and Backlight packages.

These can be supplied as separate packages if not all are required.

#### **Advance Truss Lighting Package**

- 4 Robe BMFL Spot
- 6 Robe DL7PC Wash
- 5 Martin Encore Performance CLD

#### **Truss 1 Lighting Package**

- 8 Robe DL7PC Wash
- 4 Martin Encore Performance CLD
- 4 Chauvet Strike 2 Array LED Mole

#### **Truss 2 Lighting Package**

- 8 Robe DL7PC Wash
- 4 Martin Encore Performance CLD
- 4 Chauvet Strike 2 Array LED Mole

#### ***Auditorium Moving Lights Package***

- 24 Martin Mac Ultra Performance
- 12 Robe LEDBeam 350
- 24 ETC Source 4 Par

#### ***Organ Circle/Gallery Backlight Moving Light Package***

- 16 Robe Mega Pointe
- 6 Martin Viper Wash DX

#### ***Pillar Uplighter Package***

- 60 Coemar Parlite RGB

#### ***Organ Package***

- 14 Robe Parfect

#### **Truss 3 Lighting Package**

- 6 Robe BMFL Spot
- 8 Robe DL7PC Wash
- 3 Martin Encore Performance CLD
- 4 Chauvet Strike 2 Array LED Mole

#### **Truss 4 and Backlight Lighting Package**

- 6 Robe BMFL Spot
- 6 Martin Viper Wash DX
- 6 Robe DL7PC Wash
- 24 Lustr 2 Fresnel/profile (stage wash)
- 28 Thomas Par 64 Parcan
- 6 Chauvet Strike 2 Array LED Mole
- 2 MDG ATMe Hazers

#### ***Mushroom/Roof and Audience Lighting Package***

- 13 Pulsar Chromaflood 200 Tri – Mushroom Lighting
- 24 Robe Parfect – Roof Lighting
- 36 ETC Source 4 Par – Circle L134 backlighting
- 36 ETC Source 4 Par – Gallery L134 backlighting

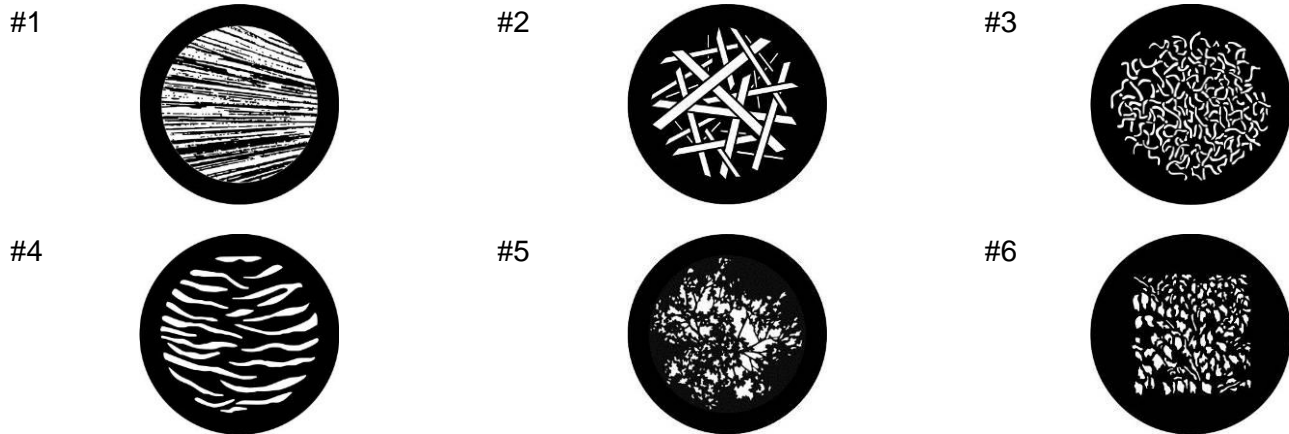
#### ***Floor Package***

- 8 Robe Mega Pointe
- 16 Robe LEDbeam 350
- 14 ColorDash Quad 12 Batten
- 2 MDG ATMe Hazers

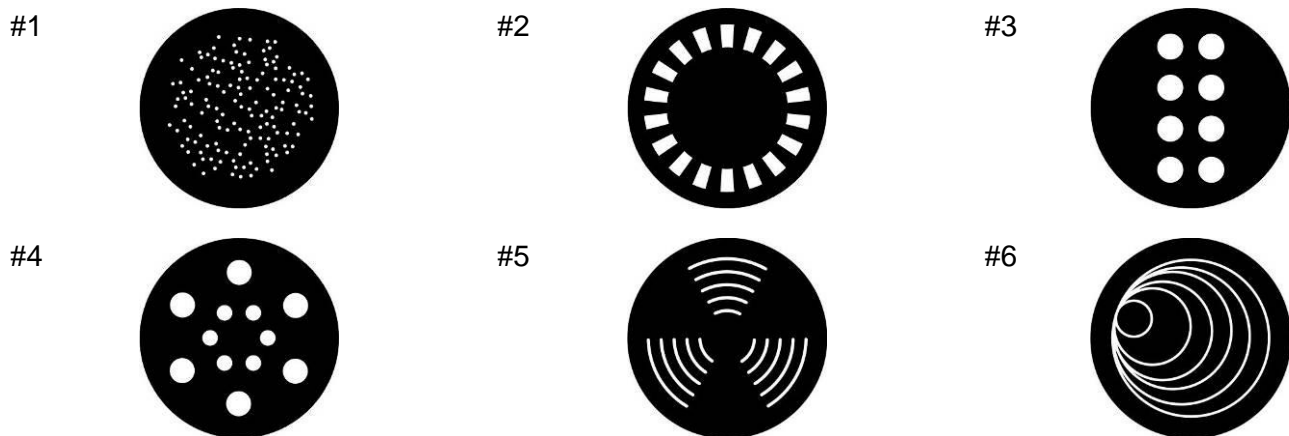
## **Moving Lights Gobo Reference**

### ***Robe BMFL Spot***

#### **Robe BMFL – Rotating Wheel 1**

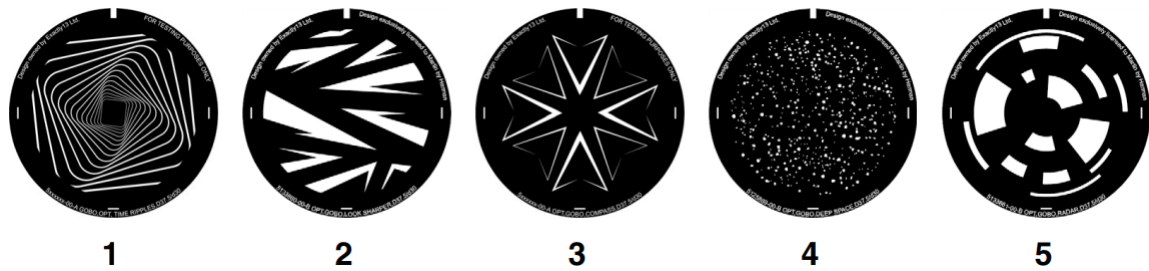


#### **Robe BMFL – Rotating Wheel 2**

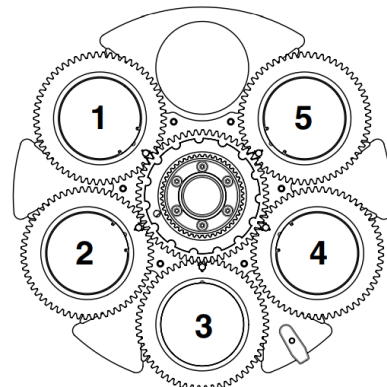


#### **Robe BMFL – Dual Graphics Wheels**

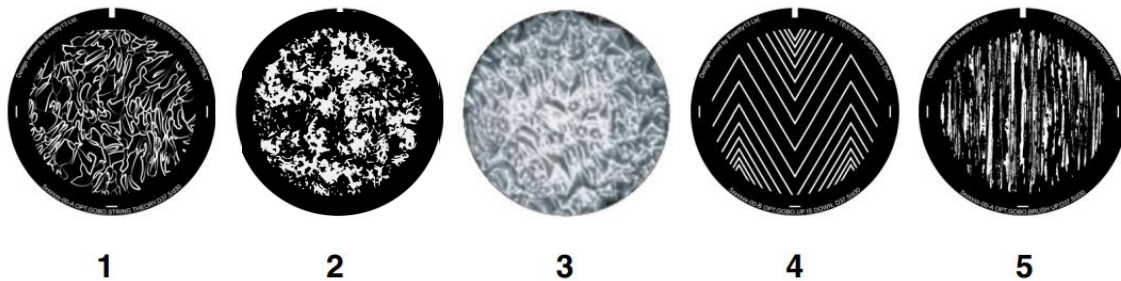
\*As per Robe Website



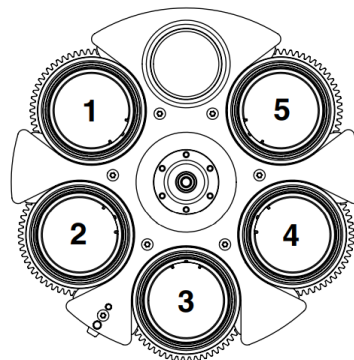
Gobo Wheel 1  
 #1 – Time Ripples  
 #2 – Look Sharper  
 #3 – Compass  
 #4 – Deep Space  
 #5 – Radar



*Aerial Wheel seen from LED side*



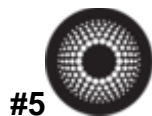
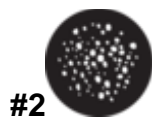
Gobo Wheel 2  
 #1 – String Theory  
 #2 – Sponge (RAH Custom)  
 #3 – Limbo  
 #4 – Up is Down  
 #5 – Brush Up



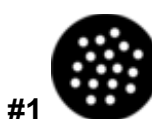
*Breakup Wheel seen from LED side*

***Robe MegaPointe – Robe standard gobos as per Robe Website***

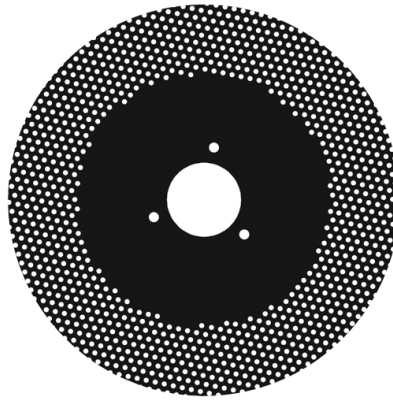
Mega Pointe – Rotating wheel 1



Mega Pointe – Fixed wheel 2



Mega Pointe – Animation Wheel



### ***Martin Encore Performance CLD***

Martin Encore Performance – Rotating wheel



Martin Encore Performance – Animation  
wheel replaced by fixed gobo wheel as shown





## DMX & Hard Power Patch List

Unit No	DMX Patch	Unit Type	Location	Mode	HP Patch	Number
1-216	1.1 - 1.216	Dimmer				
221	6.489	Chauvet Strike 2 Array	Truss 1	4 Channel	T1/1.	5
222	6.493	Chauvet Strike 2 Array	Truss 1	4 Channel	T1/1.	5
223	6.497	Chauvet Strike 2 Array	Truss 1	4 Channel	T1/1.	5
224	6.501	Chauvet Strike 2 Array	Truss 1	4 Channel	T1/1.	5
225	7.489	Chauvet Strike 2 Array	Truss 2	4 Channel	T2/2.	1
226	7.493	Chauvet Strike 2 Array	Truss 2	4 Channel	T2/2.	1
227	7.497	Chauvet Strike 2 Array	Truss 2	4 Channel	T2/2.	1
228	7.501	Chauvet Strike 2 Array	Truss 2	4 Channel	T2/2.	1
229	8.451	Chauvet Strike 2 Array	Truss 3	4 Channel	T3/2.	6
230	8.455	Chauvet Strike 2 Array	Truss 3	4 Channel	T3/2.	6
231	8.459	Chauvet Strike 2 Array	Truss 3	4 Channel	T3/2.	6
232	8.463	Chauvet Strike 2 Array	Truss 3	4 Channel	T3/2.	6
233	2.469	Chauvet Strike 2 Array	SR Organ Circle	4 Channel	C	5
234	2.473	Chauvet Strike 2 Array	SR Organ Circle	4 Channel	C	5
235	2.477	Chauvet Strike 2 Array	SR Organ Circle	4 Channel	C	5
236	2.481	Chauvet Strike 2 Array	SL Organ Circle	4 Channel	C	117
237	2.485	Chauvet Strike 2 Array	SL Organ Circle	4 Channel	C	117
238	2.489	Chauvet Strike 2 Array	SL Organ Circle	4 Channel	C	117
251	4.457	2 x Lustr 2 Fresnel	SR Circle end	Direct + Ints (8 channel)	C	29
252	4.465	2 x Lustr 2 Fresnel	SR Circle end	Direct + Ints (8 channel)	C	29
253	4.473	2 x Lustr 2 Fresnel	SR Circle end	Direct + Ints (8 channel)	C	29
254	2.421	2 x Lustr 2 14 Degree + Diff	SR Organ Circle	Direct + Ints (8 channel)	C	1
255	2.429	2 x Lustr 2 14 Degree + Diff	SR Organ Circle	Direct + Ints (8 channel)	C	1
256	2.437	2 x Lustr 2 14 Degree + Diff	SR Organ Circle	Direct + Ints (8 channel)	C	1
257	2.445	2 x Lustr 2 14 Degree + Diff	SL Organ Circle	Direct + Ints (8 channel)	C	120
258	2.453	2 x Lustr 2 14 Degree + Diff	SL Organ Circle	Direct + Ints (8 channel)	C	120
259	2.461	2 x Lustr 2 14 Degree + Diff	SL Organ Circle	Direct + Ints (8 channel)	C	120
260	4.481	2 x Lustr 2 Fresnel	SL Circle end	Direct + Ints (8 channel)	C	92
261	4.489	2 x Lustr 2 Fresnel	SL Circle end	Direct + Ints (8 channel)	C	92
262	4.497	2 x Lustr 2 Fresnel	SL Circle end	Direct + Ints (8 channel)	C	92
401	5.1	Robe DL7F Wash	Advance Truss	Mode 3 (42 Chan)	ADV/1.	1
402	5.43	Robe DL7F Wash	Advance Truss	Mode 3 (42 Chan)	ADV/1.	3
403	5.85	Robe DL7F Wash	Advance Truss	Mode 3 (42 Chan)	ADV/2.	1

# Royal Albert Hall Lighting Specification

404	5.127	Robe DL7F Wash	Advance Truss	Mode 3 (42 Chan)	ADV/2.	5
405	5.169	Robe DL7F Wash	Advance Truss	Mode 3 (42 Chan)	ADV/3.	3
406	5.211	Robe DL7F Wash	Advance Truss	Mode 3 (42 Chan)	ADV/3.	5
407	6.1	Robe DL7F Wash	Truss 1	Mode 3 (42 Chan)	T1/1.	1
408	6.43	Robe DL7F Wash	Truss 1	Mode 3 (42 Chan)	T1/1.	2
409	6.85	Robe DL7F Wash	Truss 1	Mode 3 (42 Chan)	T1/1.	4
410	6.127	Robe DL7F Wash	Truss 1	Mode 3 (42 Chan)	T1/2.	2
411	6.169	Robe DL7F Wash	Truss 1	Mode 3 (42 Chan)	T1/2.	3
412	6.211	Robe DL7F Wash	Truss 1	Mode 3 (42 Chan)	T1/3.	1
413	6.253	Robe DL7F Wash	Truss 1	Mode 3 (42 Chan)	T1/3.	3
414	6.295	Robe DL7F Wash	Truss 1	Mode 3 (42 Chan)	T1/3.	4
415	7.1	Robe DL7F Wash	Truss 2	Mode 3 (42 Chan)	T2/1.	1
416	7.43	Robe DL7F Wash	Truss 2	Mode 3 (42 Chan)	T2/1.	2
417	7.85	Robe DL7F Wash	Truss 2	Mode 3 (42 Chan)	T2/1.	4
418	7.127	Robe DL7F Wash	Truss 2	Mode 3 (42 Chan)	T2/1.	5
419	7.169	Robe DL7F Wash	Truss 2	Mode 3 (42 Chan)	T2/3.	1
420	7.211	Robe DL7F Wash	Truss 2	Mode 3 (42 Chan)	T2/3.	2
421	7.253	Robe DL7F Wash	Truss 2	Mode 3 (42 Chan)	T2/3.	4
422	7.295	Robe DL7F Wash	Truss 2	Mode 3 (42 Chan)	T2/3.	5
423	8.1	Robe DL7F Wash	Truss 3	Mode 3 (42 Chan)	T3/1.	1
424	8.43	Robe DL7F Wash	Truss 3	Mode 3 (42 Chan)	T3/1.	3
425	8.85	Robe DL7F Wash	Truss 3	Mode 3 (42 Chan)	T3/1.	5
426	8.127	Robe DL7F Wash	Truss 3	Mode 3 (42 Chan)	T3/2.	2
427	8.169	Robe DL7F Wash	Truss 3	Mode 3 (42 Chan)	T3/2.	4
428	8.211	Robe DL7F Wash	Truss 3	Mode 3 (42 Chan)	T3/5.	1
429	8.253	Robe DL7F Wash	Truss 3	Mode 3 (42 Chan)	T3/5.	3
430	8.295	Robe DL7F Wash	Truss 3	Mode 3 (42 Chan)	T3/5.	5
431	11.1	Robe DL7F Wash	Truss 4	Mode 3 (42 Chan)	T4/1.	3
432	11.43	Robe DL7F Wash	Truss 4	Mode 3 (42 Chan)	T4/2.	1
433	11.85	Robe DL7F Wash	Truss 4	Mode 3 (42 Chan)	T4/2.	4
434	11.127	Robe DL7F Wash	Truss 4	Mode 3 (42 Chan)	T4/3.	1
435	11.169	Robe DL7F Wash	Truss 4	Mode 3 (42 Chan)	T4/3.	4
436	11.211	Robe DL7F Wash	Truss 4	Mode 3 (42 Chan)	T4/4.	3
501	2.109	Robe Mega Pointe	Organ Circle SR	Mode 1	IND	3
502	2.148	Robe Mega Pointe	Organ Circle SR	Mode 1	IND	2
503	2.187	Robe Mega Pointe	Organ Circle SR	Mode 1	C	4
504	2.226	Robe Mega Pointe	Organ Circle SR	Mode 1	IND	1
505	2.265	Robe Mega Pointe	Organ Circle SL	Mode 1	IND	20
506	2.304	Robe Mega Pointe	Organ Circle SL	Mode 1	C	117
507	2.343	Robe Mega Pointe	Organ Circle SL	Mode 1	IND	19
508	2.382	Robe Mega Pointe	Organ Circle SL	Mode 1	IND	18
509	12.1	Robe Mega Pointe	Gallery Bay 23	Mode 1	I 23	A
510	12.40	Robe Mega Pointe	Gallery Bay 23	Mode 1	I 23	A
511	12.79	Robe Mega Pointe	Gallery Bay 24	Mode 1	I 23	B
512	12.118	Robe Mega Pointe	Gallery Bay 24	Mode 1	I 23	B
513	12.157	Robe Mega Pointe	Gallery Bay 30	Mode 1	I 1	B
514	12.196	Robe Mega Pointe	Gallery Bay 30	Mode 1	I 1	B
515	12.235	Robe Mega Pointe	Gallery Bay 1	Mode 1	I 1	A
516	12.274	Robe Mega Pointe	Gallery Bay 1	Mode 1	I 1	A
601	5.253	Robe BMFL Spot	Advance Truss	Mode 1	ADV/1.	4
602	5.294	Robe BMFL Spot	Advance Truss	Mode 1	ADV/2.	2

# Royal Albert Hall Lighting Specification

603	5.335	Robe BMFL Spot	Advance Truss	Mode 1	ADV/2.	4
604	5.376	Robe BMFL Spot	Advance Truss	Mode 1	ADV/3.	2
605	9.1	Robe BMFL Spot	Truss 3	Mode 1	T3/1.	2
606	9.42	Robe BMFL Spot	Truss 3	Mode 1	T3/1.	4
607	9.83	Robe BMFL Spot	Truss 3	Mode 1	T3/2.	1
608	9.124	Robe BMFL Spot	Truss 3	Mode 1	T3/2.	5
609	9.165	Robe BMFL Spot	Truss 3	Mode 1	T3/5.	2
610	9.206	Robe BMFL Spot	Truss 3	Mode 1	T3/5.	4
611	10.1	Robe BMFL Spot	Truss 4	Mode 1	T4/1.	2
612	10.42	Robe BMFL Spot	Truss 4	Mode 1	T4/1.	5
613	10.83	Robe BMFL Spot	Truss 4	Mode 1	T4/2.	3
614	10.124	Robe BMFL Spot	Truss 4	Mode 1	T4/3.	2
615	10.165	Robe BMFL Spot	Truss 4	Mode 1	T4/4.	1
616	10.206	Robe BMFL Spot	Truss 4	Mode 1	T4/4.	4
701	9.247	Martin Encore Perf CLD	Advance Truss		ADV/1.	2
702	9.285	Martin Encore Perf CLD	Advance Truss		ADV/1.	5
703	9.323	Martin Encore Perf CLD	Advance Truss		ADV/2.	3
704	9.361	Martin Encore Perf CLD	Advance Truss		ADV/3.	1
705	9.399	Martin Encore Perf CLD	Advance Truss		ADV/3.	4
706	6.337	Martin Encore Perf CLD	Truss 1		T1/1.	3
707	6.375	Martin Encore Perf CLD	Truss 1		T1/2.	1
708	6.413	Martin Encore Perf CLD	Truss 1		T1/2.	4
709	6.451	Martin Encore Perf CLD	Truss 1		T1/3.	2
710	7.337	Martin Encore Perf CLD	Truss 2		T2/1.	3
711	7.375	Martin Encore Perf CLD	Truss 2		T2/1.	5
712	7.413	Martin Encore Perf CLD	Truss 2		T2/4.	2
713	7.451	Martin Encore Perf CLD	Truss 2		T2/4.	4
714	8.337	Martin Encore Perf CLD	Truss 3		T3/1.	1
715	8.375	Martin Encore Perf CLD	Truss 3		T3/2.	3
716	8.413	Martin Encore Perf CLD	Truss 3		T3/5.	6
801	10.247	Martin Viper Wash DX	Truss 4	16Bit	T4/1.	1
802	10.265	Martin Viper Wash DX	Truss 4	16Bit	T4/1.	4
803	10.283	Martin Viper Wash DX	Truss 4	16Bit	T4/2.	2
804	10.301	Martin Viper Wash DX	Truss 4	16Bit	T4/3.	3
805	10.319	Martin Viper Wash DX	Truss 4	16Bit	T4/4.	2
806	10.337	Martin Viper Wash DX	Truss 4	16Bit	T4/4.	5
807	2.1	Martin Viper Wash DX	Organ Circle SR	16Bit	C	14
808	2.19	Martin Viper Wash DX	Organ Circle SR	16Bit	C	9
809	2.37	Martin Viper Wash DX	Organ Circle SR	16Bit	C	3
810	2.55	Martin Viper Wash DX	Organ Circle SL	16Bit	C	118
811	2.73	Martin Viper Wash DX	Organ Circle SL	16Bit	C	113
812	2.91	Martin Viper Wash DX	Organ Circle SL	16Bit	C	107
813	4.193	Robe LEDBeam 350	Circular Truss	Mode 1	CT/1.	1
814	4.215	Robe LEDBeam 350	Circular Truss	Mode 1	CT/1.	1
815	4.237	Robe LEDBeam 350	Circular Truss	Mode 1	CT/1.	2
816	4.259	Robe LEDBeam 350	Circular Truss	Mode 1	CT/1.	2
817	4.281	Robe LEDBeam 350	Circular Truss	Mode 1	CT/1.	3
818	4.303	Robe LEDBeam 350	Circular Truss	Mode 1	CT/1.	3
819	4.325	Robe LEDBeam 350	Circular Truss	Mode 1	CT/1.	4
820	4.347	Robe LEDBeam 350	Circular Truss	Mode 1	CT/1.	4

# Royal Albert Hall Lighting Specification

821	4.369	Robe LEDBeam 350	Circular Truss	Mode 1	CT/1.	5
822	4.391	Robe LEDBeam 350	Circular Truss	Mode 1	CT/1.	5
823	4.413	Robe LEDBeam 350	Circular Truss	Mode 1	CT/1.	6
824	4.435	Robe LEDBeam 350	Circular Truss	Mode 1	CT/1.	6
901	3.1	Mac Ultra Performance	Circle Rail	48 Channel	IND	5
902	3.49	Mac Ultra Performance	Circle Rail	48 Channel	IND	6
903	3.97	Mac Ultra Performance	Circle Rail	48 Channel	IND	7
904	3.145	Mac Ultra Performance	Circle Rail	48 Channel	IND	8
905	3.193	Mac Ultra Performance	Circle Rail	48 Channel	IND	9
906	3.241	Mac Ultra Performance	Circle Rail	48 Channel	IND	12
907	3.289	Mac Ultra Performance	Circle Rail	48 Channel	IND	13
908	3.337	Mac Ultra Performance	Circle Rail	48 Channel	IND	14
909	3.385	Mac Ultra Performance	Circle Rail	48 Channel	IND	15
910	3.433	Mac Ultra Performance	Circle Rail	48 Channel	IND	16
911	13.1	Mac Ultra Performance	Gallery Bay 22	48 Channel	I21	B
912	13.49	Mac Ultra Performance	Gallery Bay 20	48 Channel	I19	B
913	13.97	Mac Ultra Performance	Gallery Bay 18	48 Channel	I17	B
914	13.145	Mac Ultra Performance	Gallery Bay 16	48 Channel	I15	B
915	13.193	Mac Ultra Performance	Gallery Bay 14	48 Channel	I13	B
916	13.241	Mac Ultra Performance	Gallery Bay 10	48 Channel	I11	B
917	13.289	Mac Ultra Performance	Gallery Bay 8	48 Channel	I9	B
918	13.337	Mac Ultra Performance	Gallery Bay 6	48 Channel	I7	B
919	13.385	Mac Ultra Performance	Gallery Bay 4	48 Channel	I5	B
920	13.433	Mac Ultra Performance	Gallery Bay 2	48 Channel	I3	B
921	4.1	Mac Ultra Performance	Circular Truss	48 Channel	CT/2.	1
922	4.49	Mac Ultra Performance	Circular Truss	48 Channel	CT/2.	2
923	4.97	Mac Ultra Performance	Circular Truss	48 Channel	CT/2.	3
924	4.145	Mac Ultra Performance	Circular Truss	48 Channel	CT/2.	4
301	15.1	Robe LEDbeam 350	Floating Stage	Mode 1		
302	15.23	Robe LEDbeam 350	Floating Stage	Mode 1		
303	15.45	Robe LEDbeam 350	Floating Stage	Mode 1		
304	15.67	Robe LEDbeam 350	Floating Stage	Mode 1		
305	15.89	Robe LEDbeam 350	Floating Stage	Mode 1		
306	15.111	Robe LEDbeam 350	Floating Stage	Mode 1		
307	15.133	Robe LEDbeam 350	Floating Stage	Mode 1		
308	15.155	Robe LEDbeam 350	Floating Stage	Mode 1		
309	15.177	Robe LEDbeam 350	Floating Stage	Mode 1		
310	15.199	Robe LEDbeam 350	Floating Stage	Mode 1		
311	15.221	Robe LEDbeam 350	Floating Stage	Mode 1		
312	15.243	Robe LEDbeam 350	Floating Stage	Mode 1		
313	15.265	Robe LEDbeam 350	Floating Stage	Mode 1		
314	15.287	Robe LEDbeam 350	Floating Stage	Mode 1		
315	15.309	Robe LEDbeam 350	Floating Stage	Mode 1		
316	15.331	Robe LEDbeam 350	Floating Stage	Mode 1		
517	14.1	Robe MegaPointe	Floating Stage	Mode 1		
518	14.40	Robe MegaPointe	Floating Stage	Mode 1		
519	14.79	Robe MegaPointe	Floating Stage	Mode 1		
520	14.118	Robe MegaPointe	Floating	Mode 1		

# Royal Albert Hall Lighting Specification

			Stage			
521	14.157	Robe MegaPointe	Floating Stage	Mode 1		
522	14.196	Robe MegaPointe	Floating Stage	Mode 1		
523	14.235	Robe MegaPointe	Floating Stage	Mode 1		
524	14.274	Robe MegaPointe	Floating Stage	Mode 1		
1001	1.217	Chroma Flood 200	Gallery Floor	3 Channel RGB	I9	A
1002	1.220	Chroma Flood 200	Gallery Floor	3 Channel RGB	I9	A
1003	1.223	Chroma Flood 200	Gallery Floor	3 Channel RGB	I9	A
1004	1.226	Chroma Flood 200	Gallery Floor	3 Channel RGB	I9	A
1005	1.229	Chroma Flood 200	Gallery Floor	3 Channel RGB	I9	A
1006	1.232	Chroma Flood 200	Gallery Floor	3 Channel RGB	I9	A
1007	1.235	Chroma Flood 200	Gallery Floor	3 Channel RGB	I5	A
1008	1.238	Chroma Flood 200	Gallery Floor	3 Channel RGB	I5	A
1009	1.241	Chroma Flood 200	Gallery Floor	3 Channel RGB	I5	A
1010	1.244	Chroma Flood 200	Gallery Floor	3 Channel RGB	I5	A
1011	1.247	Chroma Flood 200	Gallery Floor	3 Channel RGB	I5	A
1012	1.250	Chroma Flood 200	Gallery Floor	3 Channel RGB	I5	A
1013	1.253	Chroma Flood 200	Gallery Floor	3 Channel RGB	I5	A
	Start 1.256 - 1.433	RGB Par Pillar x 60 units	Bays 1 - 30	3 Channel RGB		
	1.436	RGBW Pars Organ Pipes	Organ Circle SR	4 Channel RGBW	IND	4
	1.440	RGBW Pars Organ Pipes	Organ Circle SL	4 Channel RGBW	IND	4
	1.444	RGBW Pars Organ Wood	Organ Circle SR	4 Channel RGBW	IND	17
	1.448	RGBW Pars Organ Wood	Organ Circle SL	4 Channel RGBW	IND	17
	1.464	RGBW Birdies Uplight Pipes	Organ Plinthes	4 Channel RGBW		
	1.452	RGBW Pars on Roof	Gallery	4 Channel RGBW		
	1.456	RGBW Pars on Roof	Gallery	4 Channel RGBW		
	1.460	RGBW Pars on Roof	Gallery	4 Channel RGBW		
	14.501	2 x MDG ATMe	Stage	3 channel		
	2.501	2 x MDG ATMe	Circle Stage End	3 channel		

## **Royal Albert Hall Dimmer/Address Cheat Sheet**

**\*\*All Dimmers and LEDs listed below are on Universe 1\*\* (Lustrs on universe 2+4)**

### **Circle Audience (L134)**

(Amber backlight wash of stalls and arena)

166-168

172-174

178-180

181-183

187-189

193-195

### **Roof - LEDs**

(RGBW wash of roof metal dome)

24 RGBW LEDs in total

1.452

1.456

1.460

### **Red Par B/L wash of stage**

(12 Par 64s backlighting stage)

145-150

### **Circle 10 Degrees**

(6 Source 4 10 degrees for specials on circle rail)

13-18

### **Lustr 2 Profile B/L wash of stage**

(12 Lustr 2 14 degrees c/w diffuser backlighting stage)

Direct mode 7 colours plus dimmer (8 channels)

Unit# 254-256 + 257-259

### **Choir B/L Floods (O/W)**

(6 Floods on Organ Circle to downlight Choir seats)

37-42

### **Gallery Audience (L134)**

(Amber backlight wash of circle)

73-108

### **O/W Par wash of Arena**

(O/W wash of arena floor)

169-171

175-177

184-186

190-192

### **Truss Strike 2 LED Mole Fays (2 Lites)**

See Patch sheet

### **Organ Wash - LEDs**

(4 sets of RGBW LEDs on woodwork and pipes)

1.436 + 1.440 Pipes

1.444 + 1.448 Woodwork

1.464 – LED Birdies Uplight Pipes

### **Gallery 5 Degrees**

(2 pairs of Source 4 5 degrees for stage front fill)

11+12

### **Lustr 2 Fresnel side wash of stage**

(12 Lustr 2 fresnels side wash of stage)

Direct mode 7 colours plus dimmer (8 channels)

Unit# 251-253 + 260-262

### **Circle Source 4 Zooms + 19 Degrees**

(8 Source 4 15/30s for specials on circle rail)

206-214 – Zooms

196+197 – 19 Degrees