

Royal Albert Hall

ELGAR ROOM

Technical Specification

2019

Royal Albert Hall
Kensington Gore
London
SW7 2AP

020 7589 3203

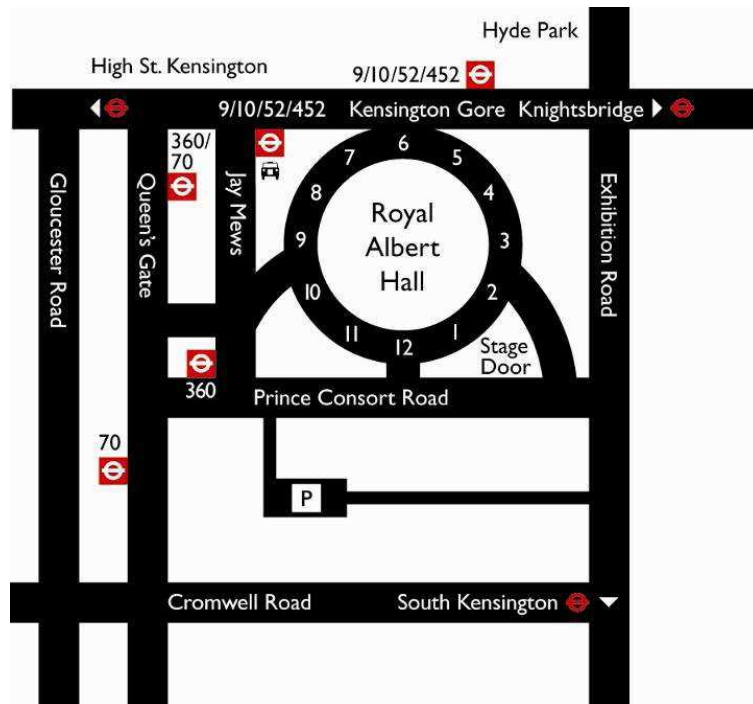
www.royalalberthall.com

For any enquiries, please contact:
technicalenquiries@royalalberthall.com

This document is meant as a guide to incoming companies and designers. The specifications are subject to change and will be updated as frequently as possible. Please consult the Technical Show Manager who has been allocated to your event for hire prices and equipment changes.

There is a generic RAH risk assessment form attached to this document. Risk assessments are required two weeks in advance of a show coming into the Royal Albert Hall.



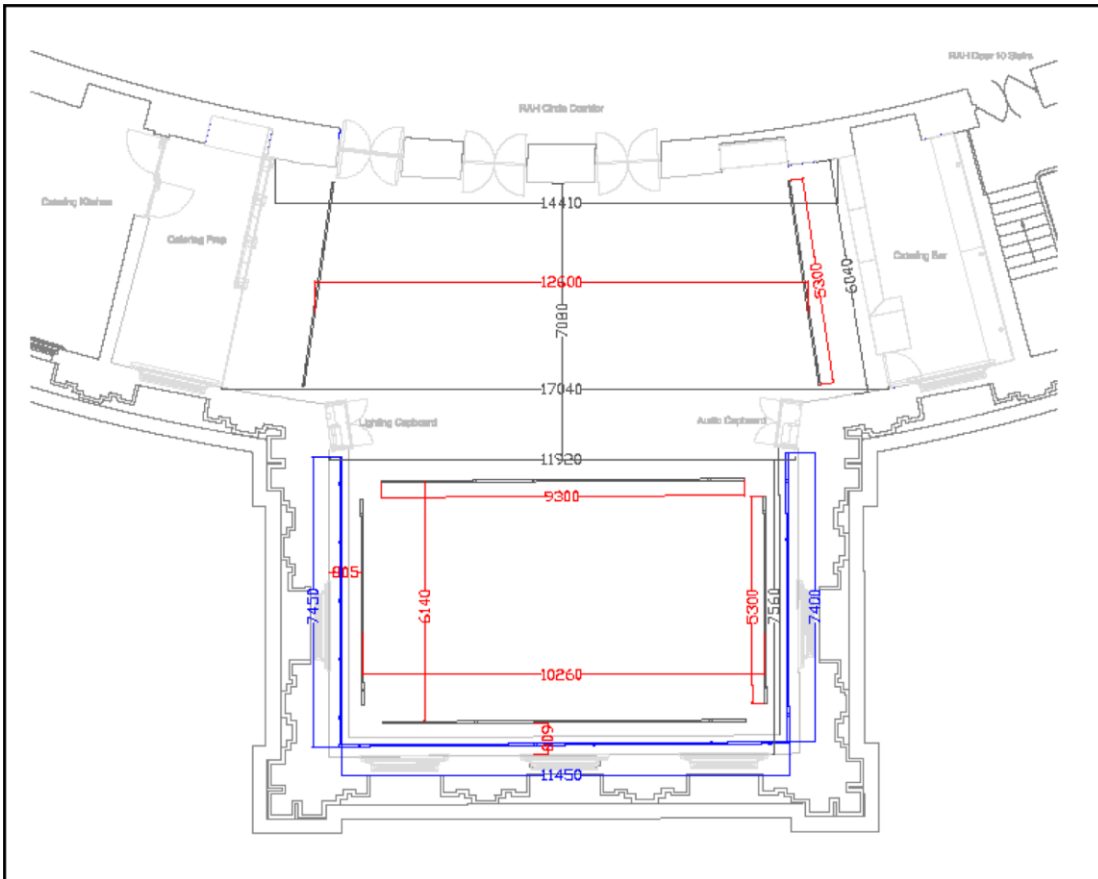


Royal Albert Hall Location Map

Contents

Room Dimensions and Overview	4
Lighting	6
Lighting Infrastructure	6
Patching	7
Network Points	7
Dimming and Hard Power	7
Fixed Lighting Equipment	8
Sound	9
System	9
Sound Equipment	10
Control	10
Extra Equipment.....	10
Induction Loop	10
Audio Visual.....	11
Power	11
Broadcast.....	11
Rigging.....	12
Lighting Bars	12
Drape Bars	12
Health & Safety	13
Risk Assessments	13
Sample Risk Assessments	14
Appendix 1 - Useful measurements	15

Room Dimensions and Overview



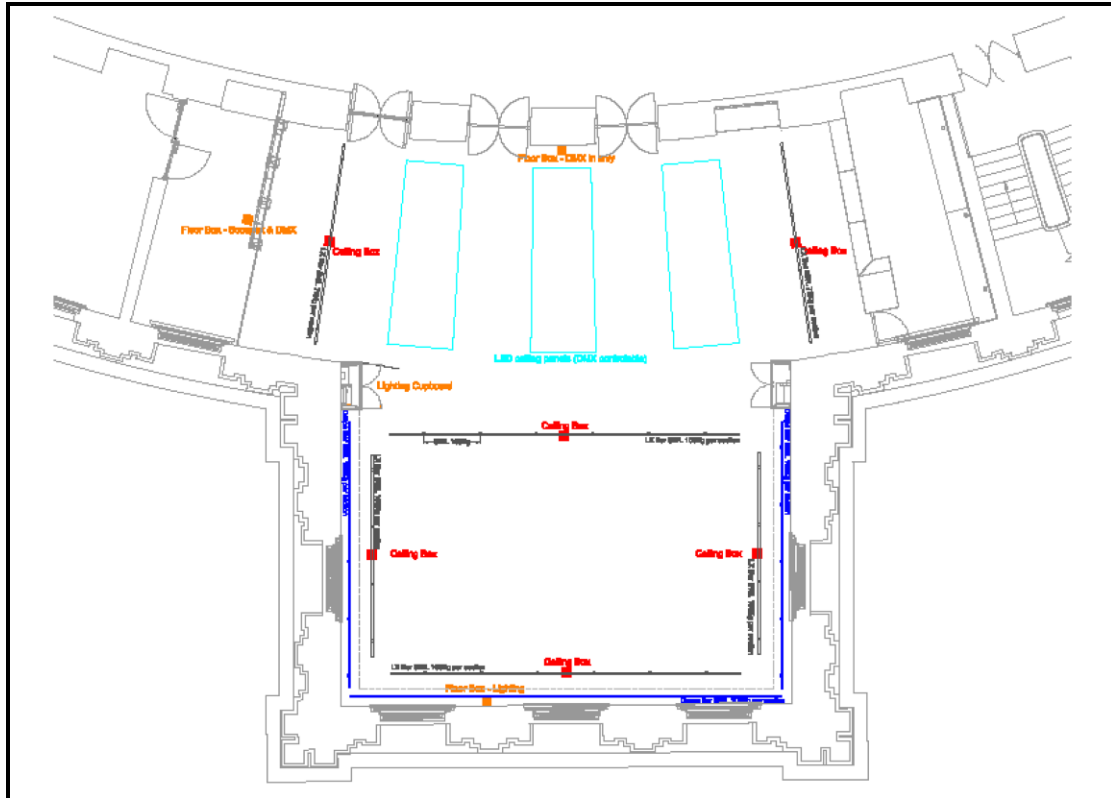
The Elgar Room is a multipurpose function room and restaurant. It has a complete set of its own technical facilities, some of which can be connected to systems in the rest of the Hall.

It is located on the west side of the Hall, above the Door 9 Porch, on the circle level (3rd floor).

The room is extremely flexible to match whatever requirements you may have. Please ask the Event Co-ordinator or Technical Show Manager if you need more information than is included in this guide.

Daylight can be blacked out by powered curtains/blinds which are controlled from a wall switch. There are also ceiling to floor black drapes that can be pulled around the window area to give the room a black out theatre look.

Lighting



Lighting Bars and Sockets

Lighting Infrastructure

There are six straight lighting bars and one U-shaped drape bar on which lighting equipment can be positioned; Each of the lighting bars has power and data connections in a ceiling box adjacent to the centre of the bar. The room lighting, including four RGB LED ceiling panels, can be controlled by DMX from a lighting desk or simply by a preset programmed panel. DMX is output in all ceiling boxes and some floor boxes (see plan above). The DMX patch, including two 5-way buffers, is in the lighting patch cupboard. This enables a lighting desk to be placed adjacent to any of the lighting floor boxes.

Patching

All ceiling/floor sockets are fully patchable from the patch bays in the lighting or audio cupboards.

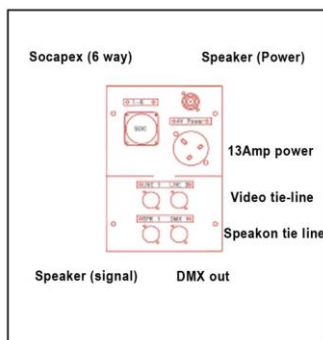


Lighting patch bay



Audio patch bay

These patch bays feed the six ceiling sockets boxes; one is located in the centre of each lighting bar.



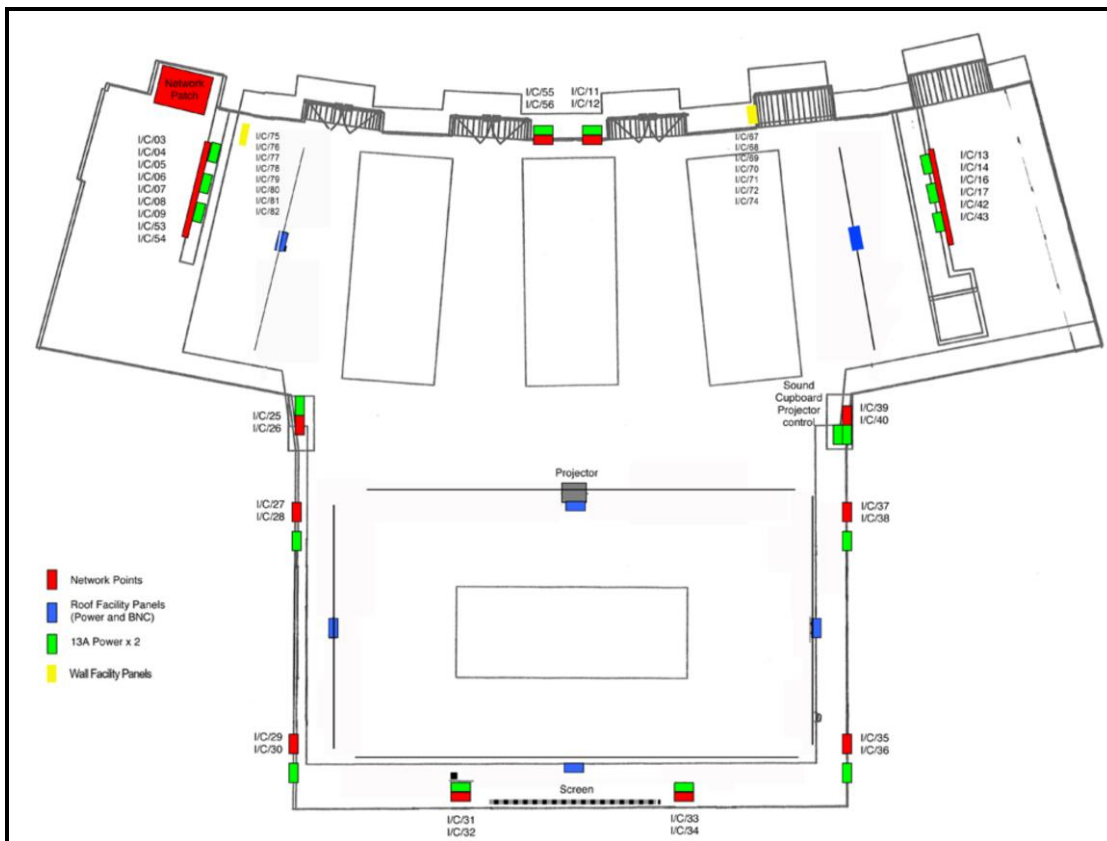
Ceiling Socket Layout Diagram

These provide hard and/or dimmed lighting power via the Socapex multi-core connector and a 5pin XLR for DMX lighting control.

Speaker power and signal is provided by Powercon and XLR tie line. In addition there is video tie line and Speakon tie line to the audio cupboard. Additional 13A power is included for flown equipment (e.g. projectors).

There are also more floor boxes, one for audio and two for lighting with individually specified combinations of connections. Each of the lighting boxes has a Socapex multi-core outlet and a DMX outlet.

Network Points



Network points and 13 amp sockets



There are multiple Ethercon CAT5 network points positioned around the room to allow for digital signal distribution.

The network points are all available for show and event use. These are all fully patchable to allow signal to be distributed across the room.

Dimming & Hard Power

All dimming and hard power is contained in a single accessible lighting cupboard. There are 12 ways of 10A hard power provided (each way has two outputs). Dimmers and hard power are patchable to 48 sockets in floor and ceiling boxes (as per plan).

Fixed Elgar lighting equipment:

MA dot2 Core with additional F-Wing.

8 x ETC Source 4 Junior zoom 25-50°
2 x ETC Source 4 19° with EDLT lens
2 x ETC Source 4 19° with EDLT lens (with permanent Elgar Room gobos)
2 x ETC Source 4 pars (merchandise lights)
9 x Selecon Acclaim fresnel with barn doors
8 x Robe Robin DL4F Wash
7 x Robe Robin DL4X Spot

Other equipment can be arranged at extra cost to suit your specific needs. The Hall has a large number of generic and intelligent fixtures, as well as lighting design skills and contacts with hire companies. Please liaise you're your Event Co-ordinator or Event Technician for full details and to discuss your exact requirements.

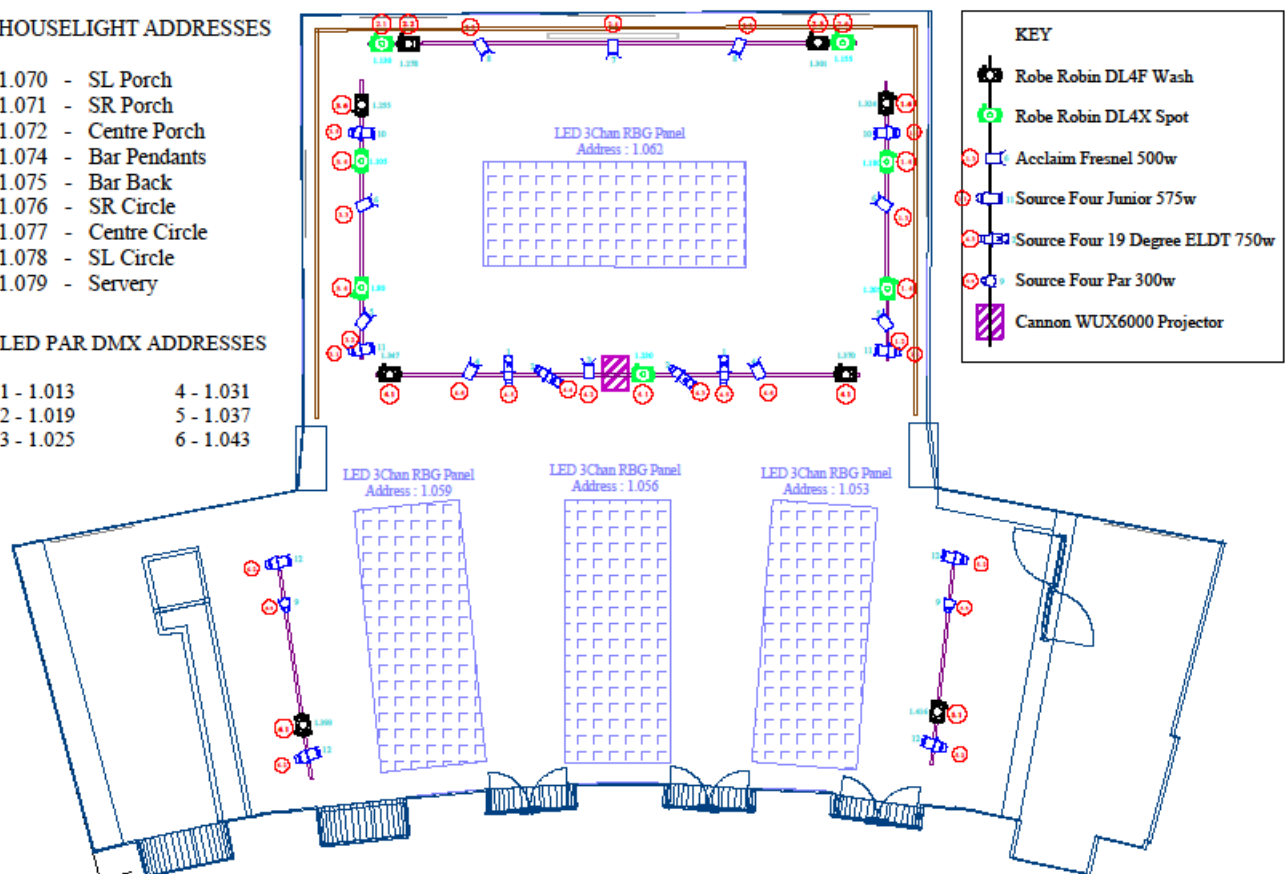
Elgar Room: Standard Lighting Rig

HOUSELIGHT ADDRESSES

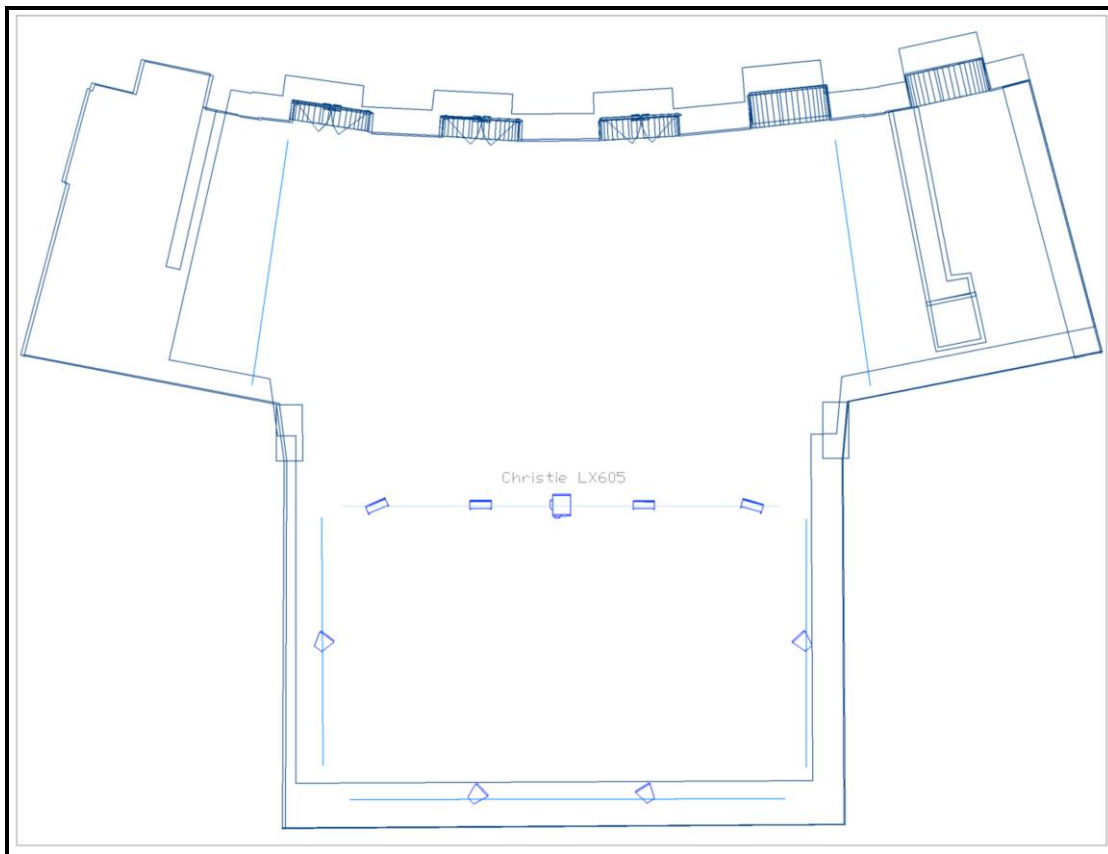
1.070 - SL Porch
1.071 - SR Porch
1.072 - Centre Porch
1.074 - Bar Pendants
1.075 - Bar Back
1.076 - SR Circle
1.077 - Centre Circle
1.078 - SL Circle
1.079 - Servery

LED PAR DMX ADDRESSES

1 - 1.013 4 - 1.031
2 - 1.019 5 - 1.037
3 - 1.025 6 - 1.043



Sound and Video Projection layout



System

The PA system is suitable for high quality music and speech reinforcement. It comprises of four Meyer UPJ speakers in the Porch area and four Meyer UP4-XP in the bar area.

There are two handheld radio microphones and an iPod/music input installed in the audio cupboard. The system also allows users to plug a line level input from a mixer into the PA system.

To easily enable the use of a large sound desk, the audio floor box routes 32x XLR channels to the audio cupboard via Harting multi-core connectors.

The system is controlled by an Audia Solo DSP unit located in the audio cupboard. This unit allows sophisticated computer control of the system via a connected laptop with Audia software, or via a simple preset volume/mode panel (mounted in the audio rack).

Sound Equipment

Mixing Desk

DiGiCo SD9
2 x D-Racks (32in 8out)

Microphones

1 x Shure Beta 52A
1 x AKG C3000
3 x Sennheiser E604
8 x Shure SM58
5 x Shure SM57
2 x Shure Beta58
2 x Shure PG48
2 x AT4021 condenser
2 x Rode NT5 condenser
2 x AKG 214 condenser
4 x Shure SM58 S50
4 x Shure QLXD24 receiver
1 x Shure ULX Beta 87a
1 x Shure ULXP4 receiver
2 x DPA 4099 with assortment of mounts

10 K&M tall mic stand with boom
6 K&M short mic stand with boom,
10 DI boxes

Monitor System

2 x FFA-4004
2 x QSC PLX1802
1 x EM Acoustics EMS 215 Sub
2 x EM Acoustics i8 Sub
6 x EM Acoustics M-12
5 x EM Acoustics EMS-81
2 x EM Acoustics EMS-81x

Induction Loop

An Induction Loop system has been installed on the ceiling of the Elgar Room giving good coverage of the central area for the hard of hearing. All the microphones are routed to this system and a guest user can connect to it.

Audio Visual

There is a fixed installed projector and a motorised projection surface. This is located in the centre of the room at the entrance to the porch (please see sound rig plan above). The projector is a Canon WUX6000, which outputs 5000 ANSI Lumens and is equipped with a 1.7 – 2.89:1 zoom lens. Interface is via a Kramer VGA – Cat 5 converter or BNC located in the sound patching cupboard.

Please note that this projector is in a fixed position and is unable to be de-rigged or moved under any circumstances. There is an extra charge for the use of this facility.

Accessories are available: Kramer 4way VGA switcher and remote shutter control. A Windows laptop is also available, all of which may incur a charge.

Built in Elgar Projection screen – bottom to floor – 2260mm

Built in Elgar Projection screen 8' x 6' (4:3 ratio)

Large Cinema Screen – 13x 7.5 (Front projected)

Power

Heavy mains power is supplied in addition to that used by the installed lighting and audio systems:

63A TPN Ceeform Socket in lighting cupboard

63A SPN Ceeform Socket in audio cupboard

Broadcast

There are links to the RAH basement OB patch room which has connection points to the rest of the Hall.

This is via an 8-way analogue multi-core terminated in four XLR male connectors and four XLR female connectors on the patch panel and an optical fiber terminated with two fiber ST connectors on the patch panel.

Rigging

Lighting Bars

The four lighting bars in the porch area are rated to 100Kg uniformly distributed load per section (approx 1.5m). The two bars in the circle area are rated to 75Kg uniformly distributed load per section (approx 1.5m).

Drape Bars

The three drape bars form a U-shape in the rectangular section of the room; they sit in a ceiling cut-out so the drapes match the full ceiling height. Please note that the bars do not meet at the corners, there is a gap of approximately 20cm. There are ceiling to floor heavy black drapes installed that cover the entire window / wall area in the porch rectangle.

Drape bars are rated to 25kg uniformly distributed load per metre. Lighting/Audiovisual equipment can be suspended from the drape bars, but may require the use of drop-arms (not provided).

Health and Safety Specifications

All information in this section is taken from the Royal Albert Hall's health and safety policies which are available to all incoming companies. This is not meant in any way as a comprehensive guide to health and safety, just as a reference to some of the more important factors.

Please refer to:

The Royal Albert Hall, Event Safety Guide
(Available from your Event Co-ordinator)

The Royal Albert Hall Rigging Code of Practice
(Available from your Event Co-ordinator)

Risk assessments

Essentially there are five steps to risk assessment, which all those working in the Hall must consider:

1. Look for hazards.
2. Decide who might be affected and how.
3. Evaluate the risks arising from the hazards and decide whether existing precautions are adequate or more should be done.
4. Record your findings.
5. Review your assessment from time to time and revise it if necessary.

All routine activities relating to the staging of an event, from the load-in, the fit-up and the load-out have been assessed by appropriately trained Hall staff and are monitored / recorded by the show staff. Where deemed necessary, safety precautions have been put in place and methods of operation improved to reduce hazard and risk.

There may be occasions when unusual staging arrangements require activities not currently assessed. On such occasions promoters and production companies will be asked to assist the Hall's show staff in carrying out a risk assessment and implementing appropriate steps to ensure safe working conditions.

Everyone engaged in activities related to the staging of an event should ensure that their own personal safety and that of others is not compromised. Operatives should only undertake those tasks that they are trained or skilled in, are physically capable of doing and that pose no risk or hazard to themselves or those around them.

If required, further and more detailed information regarding risk assessment is available from your Event Manager.

Sample Risk Assessment Form

Quick Risk Assessment	
Job or Operation	
Hazards	
Personnel at Risk	
Severity	
Initial Risk Rating	LOW MED HIGH
Controls	
Further Action Required / Notes	
Residual Risk Rating	LOW MED HIGH
Assessed by	
Action by	

Figure 1 - Sample Risk Assessment Form

Appendix 1 – Useful Measurements

Full Ceiling Height – 5.28m

Floor to Sub-Ceiling Height – 4.73m

Main door dimensions – 3.30m (h) x 1.85m (w)

Door 11 lift dimensions – 2.98m (h) x 1.79m (w)

Lighting Bar Height – 4.53m

East Drape Bar - 7m [22' 11"]

South Drape Bar - 11.5m [37' 8"]

West Drape Bar - 7m [22' 11"]

Drop (floor to bar) - 5m

Built in Elgar Projection screen – bottom to floor – 2260mm

Built in Elgar Projection screen 8' x 6' (4:3 ratio)

Large Cinema Screen – 13x 7.5 (Front projected)